

Chapter - 2

Gastrointestinal Tract Cancers (C15 – C25)

CHAPTER 2

GASTROINTESTINAL TRACT CANCERS

Table 2.0: Site classification according to ICD-10

Site of Cancer	ICD-10 Code
Oesophagus	C15
Stomach	C16
Liver	C22
Gall Bladder & other unspecified parts of the biliary tract	C23 - C24
Colon	C18
Rectum	C19 – C20
Other GI tract sites such as Small intestine, Anus, Pancreas	C17, C21, C25

2.1 Number and relative proportion by sites of GI tract cancers

Table 2.1: Number (n) and relative proportion (%) by sites of GI tract cancers relative to all sites of cancer

Site of cancer	Males		Females		Total	
	n	%	n	%	n	%
Oesophagus	16758	5.3	9978	3.4	26736	4.4
Stomach	14170	4.4	6548	2.3	20718	3.4
Colon	6610	2.1	4382	1.5	10992	1.8
Rectum	9565	3.0	6323	2.2	15888	2.6
Liver And Intrahepatic Bile Ducts	6374	2.0	1912	0.7	8286	1.4
Gall Bladder	6883	2.2	10873	3.7	17756	2.9
Other GI tract	5776	1.8	3615	1.2	9391	1.5
Total GI tract cancer	66136	20.7	43631	15.0	109767	18.0
All sites	319098	100.0	290986	100.0	610084	100.0

2.2 Distribution of GI tract cancers according to five-year age groups

Table 2.2.1: Number (n) and proportion (%) of GI tract cancers according to five-year age groups: Males

Age group	Oesophagus			Stomach			Colon			Rectum			Liver			Gall Bladder			Other GI tract cancers			Total GI Cancers		
	n	Row %	Col %	n	Row %	Col %	N	Row %	Col %	n	Row %	Col %	n	Row %	Col %	n	Row %	Col %	n	Row %	Col %	n	Row %	Col %
<20	10	2.1	0.1	35	7.4	0.2	43	9.0	0.7	97	20.4	1.0	246	51.7	3.9	12	2.5	0.2	33	6.9	0.6	476	100.0	0.7
20-24	30	5.1	0.2	64	10.8	0.5	94	15.9	1.4	255	43.1	2.7	37	6.3	0.6	38	6.4	0.6	74	12.4	1.3	592	100.0	0.9
25-29	58	5.5	0.3	170	16.2	1.2	145	13.8	2.2	417	39.8	4.4	51	4.9	0.8	91	8.7	1.3	115	11.1	2.0	1047	100.0	1.6
30-34	164	9.0	1.0	341	18.7	2.4	261	14.3	3.9	556	30.6	5.8	109	6.0	1.7	204	11.2	3.0	184	10.2	3.2	1819	100.0	2.8
35-39	384	14.1	2.3	505	18.6	3.6	383	14.1	5.8	634	23.3	6.6	147	5.4	2.3	354	13.0	5.1	309	11.5	5.3	2716	100.0	4.1
40-44	803	19.3	4.8	832	20.0	5.9	520	12.5	7.9	724	17.4	7.6	296	7.1	4.6	572	13.7	8.3	416	10.0	7.2	4163	100.0	6.3
45-49	1545	24.4	9.2	1402	22.1	9.9	690	10.9	10.4	876	13.8	9.2	457	7.2	7.2	756	11.9	11.0	608	9.7	10.5	6334	100.0	9.6
50-54	2273	27.6	13.6	1733	21.0	12.2	790	9.6	12	1059	12.8	11.1	710	8.6	11.1	927	11.2	13.5	751	9.2	13.0	8243	100.0	12.5
55-59	2738	28.0	16.3	2173	22.3	15.3	847	8.7	12.8	1156	11.8	12.1	944	9.7	14.8	1056	10.8	15.3	852	8.7	14.8	9766	100.0	14.8
60-64	3135	28.8	18.7	2426	22.3	17.1	955	8.8	14.4	1246	11.5	13.0	1161	10.7	18.2	1077	9.9	15.6	870	8.0	15.1	10870	100.0	16.4
65-69	2486	27.2	14.8	2052	22.5	14.5	806	8.8	12.2	1087	11.9	11.4	1032	11.3	16.2	883	9.7	12.8	787	8.6	13.6	9133	100.0	13.8
70-74	1704	28.0	10.2	1396	23.0	9.9	559	9.2	8.5	764	12.6	8.0	697	11.5	10.9	517	8.5	7.5	443	7.2	7.7	6080	100.0	9.2
75-79	873	28.0	5.2	679	21.8	4.8	335	10.8	5.1	422	13.6	4.4	334	10.7	5.2	243	7.8	3.5	228	7.3	3.9	3114	100.0	4.7
80-84	398	30.5	2.4	269	20.6	1.9	130	10.0	2.0	197	15.1	2.0	118	9.0	1.9	118	9.0	1.7	75	5.8	1.3	1305	100.0	2.0
85+	156	33.3	0.9	91	19.4	0.6	49	10.5	0.7	73	15.6	0.7	33	7.1	0.6	35	7.5	0.6	31	6.6	0.5	468	100.0	0.6
All ages*	16758	25.3	100.0	14170	21.4	100.0	6610	10.0	100.0	9565	14.5	100.0	6374	9.6	100.0	6883	10.4	100.0	5776	8.8	100.0	66136	100.0	100.0
Mean (SD) Years	59(11)			58 (12)			55(14)			53(15)			57(16)			55(12)			57(13)			57(13)		

* Includes cases with unknown age

Table 2.2.2: Number (n) and proportion (%) of GI tract Cancers according to five-year age groups: Females

Age group	Oesophagus			Stomach			Colon			Rectum			Liver			Gall Bladder			Other GI tract cancers			Total GI Cancers		
	n	Row %	Col %	n	Row %	Col %	n	Row %	Col %	n	Row %	Col %	n	Row %	Col %	n	Row %	Col %	n	Row %	Col %	n	Row %	Col %
<20	1	0.3	<0.1	31	10.5	0.5	29	9.9	0.7	51	17.3	0.8	150	51.0	7.8	4	1.4	<0.1	28	9.6	0.8	294	100.0	0.7
20-24	20	4.0	0.2	82	16.4	1.3	69	13.8	1.6	208	41.7	3.3	20	4.0	1.00	52	10.4	0.5	48	9.7	1.3	499	100.0	1.1
25-29	78	8.2	0.8	222	23.4	3.4	111	11.7	2.5	258	27.2	4.1	42	4.4	2.2	150	15.8	1.4	87	9.3	2.4	948	100.0	2.2
30-34	194	12.0	1.9	342	21.2	5.2	173	10.7	3.9	385	23.8	6.1	64	4.0	3.3	328	20.3	3.0	129	8.0	3.6	1615	100.0	3.7
35-39	391	14.4	3.9	512	18.9	7.8	265	9.8	6.0	493	18.2	7.8	117	4.3	6.1	703	25.9	6.5	230	8.5	6.4	2711	100.0	6.2
40-44	712	18.7	7.1	668	17.5	10.2	357	9.4	8.1	538	14.1	8.5	145	3.8	7.6	1137	29.8	10.5	260	6.7	7.2	3817	100.0	8.7
45-49	1179	21.7	11.8	813	15.0	12.4	463	8.5	10.6	670	12.3	10.6	196	3.6	10.3	1721	31.7	15.8	393	7.2	10.9	5435	100.0	12.5
50-54	1378	22.7	13.8	904	14.9	13.8	561	9.2	12.8	776	12.8	12.3	240	4.0	12.6	1707	28.1	15.7	507	8.3	14.0	6073	100.0	13.9
55-59	1428	23.5	14.3	881	14.5	13.5	585	9.6	13.4	769	12.7	12.2	251	4.1	13.1	1621	26.7	14.9	529	8.9	14.6	6064	100.0	13.9
60-64	1601	25.5	16.0	856	13.6	13.1	629	10.0	14.4	772	12.3	12.2	289	4.6	15.1	1560	24.9	14.3	567	9.1	15.7	6274	100.0	14.4
65-69	1356	28.1	13.6	636	13.2	9.7	543	11.2	12.4	667	13.8	10.5	193	4.0	10.1	986	20.4	9.1	450	9.3	12.4	4831	100.0	11.1
70-74	919	32.0	9.2	357	12.4	5.5	334	11.6	7.6	368	12.8	5.8	123	4.3	6.4	543	18.9	5.0	224	8.0	6.2	2868	100.0	6.6
75-79	439	31.8	4.4	168	12.2	2.6	153	11.1	3.5	230	16.7	3.6	50	3.6	2.6	246	17.8	2.3	95	6.8	2.6	1381	100.0	3.2
80-84	193	34.8	2.0	58	10.5	0.8	80	14.4	1.8	91	16.4	1.4	18	3.2	1.0	70	12.6	0.6	44	8.1	1.2	554	100.0	1.3
85+	89	33.8	1.0	17	6.5	0.2	30	11.4	0.7	47	17.9	0.8	12	4.6	0.7	44	16.7	0.4	24	9.1	0.7	263	100.0	0.5
All ages*	9978	22.9	100.0	6548	15.0	100.0	4382	10.0	100.0	6323	14.5	100.0	1912	4.4	100.0	10873	24.9	100.0	3615	8.3	100.0	43631	100.0	100.0
Mean (SD) Years	57 (12)			52 (13)			54 (14)			52 (15)			50 (18)			53 (12)			54 (13)			54 (13)		

* Includes cases with unknown age

2.3 Broad methods of diagnosis

Table 2.3: Number (n) and proportion (%) of GI tract cancers by most valid method of diagnosis – GI Cancers

Method of diagnosis	Oesophagus		Stomach		Colon		Rectum		Liver		Gall Bladder		Other GI tract cancers		Total GI cancers	
	n	%	n	%	n	%	n	%	n	%	n	%	n	%	n	%
Males																
Microscopic	16654	99.4	14020	98.9	6536	98.9	9505	99.4	4492	70.5	6429	93.4	5643	97.7	63279	95.7
Imaging Techniques	65	0.4	111	0.8	53	0.8	46	0.5	1701	26.7	220	3.2	111	1.9	2307	3.5
Clinical Only	11	0.1	19	0.1	11	0.2	6	0.1	12	0.2	209	3.0	6	0.1	274	0.4
Total*	16758	100.0	14170	100.0	6610	100.0	9565	100.0	6374	100.0	6883	100.0	5776	100.0	66136	100.0
Females																
Microscopic	9921	99.4	6457	98.6	4335	98.9	6276	99.3	1638	85.7	9967	91.7	3512	97.2	42106	96.5
Imaging Techniques	32	0.3	61	0.9	32	0.7	36	0.6	239	12.5	447	4.1	91	2.5	938	2.1
Clinical Only	5	0.1	11	0.2	8	0.2	3	<0.1	4	0.2	435	4.0	6	0.2	472	1.1
Total*	9978	100.0	6548	100.0	4382	100.0	6323	100.0	1912	100.0	10873	100.0	3615	100.0	43631	100.0

*Including others and unknown cases of method of diagnosis

2.4 Types of microscopic diagnosis

Table 2.4: Number (n) and proportion (%) of GI tract cancers according to specific type of microscopic diagnosis

Type of microscopic diagnosis	Oesophagus		Stomach		Colon		Rectum		Liver		Gall Bladder		Other GI tract cancers		Total GI cancers	
	n	%	n	%	n	%	n	%	n	%	n	%	n	%	n	%
Males																
Primary Histology	16273	97.7	13521	96.4	6203	94.9	9350	98.4	2925	65.1	4002	62.2	4418	78.3	56692	89.6
Histology of metastasis	88	0.5	146	1.0	136	2.1	68	0.7	125	2.8	270	4.2	256	4.5	1089	1.7
Cytology of Primary	181	1.1	232	1.7	115	1.8	52	0.5	1330	29.6	1619	25.2	711	12.6	4240	6.7
Cytology of Metastasis	112	0.7	121	0.9	82	1.3	35	0.4	112	2.5	538	8.4	258	4.5	1258	2.0
All microscopic	16654	100.0	14020	100.0	6536	100.0	9505	100.0	4492	100.0	6429	100.0	5643	100.0	63279	100.0
Females																
Primary Histology	9739	98.2	6161	95.4	4108	94.8	6167	98.3	1017	62.1	5435	54.5	2765	78.7	35392	84.1
Histology of metastasis	36	0.4	93	1.4	89	2.1	38	0.6	46	2.8	398	4.0	137	3.9	837	2.0
Cytology of Primary	101	1.0	144	2.2	79	1.8	47	0.7	520	31.7	3153	31.6	449	12.8	4493	10.7
Cytology of Metastasis	45	0.5	59	0.9	59	1.4	24	0.4	55	3.4	981	9.8	161	4.6	1384	3.3
All microscopic	9921	100.0	6457	100.0	4335	100.0	6276	100.0	1638	100.0	9967	100.0	3512	100.0	42106	100.0

2.5 Major histological types

2.5.1 Oesophagus (C15)

Table 2.5.1: Number (n) and proportion (%) according to broad histological classification- Cancer of Oesophagus

Broad histological classification	Males		Females		Total	
	n	%	n	%	n	%
Squamous cell carcinoma						
Squamous cell carcinoma NOS	13218	79.4	8507	85.7	21725	81.7
Squamous cell carcinoma, keratinizing	296	1.8	217	2.2	513	1.9
Squamous cell carcinoma, non-keratinizing	261	1.6	195	2.0	456	1.7
All Other squamous cell carcinomas	78	0.5	79	0.8	157	0.6
Adenocarcinoma						
Adenocarcinoma NOS	1913	11.5	523	5.3	2436	9.2
Papillary adenocarcinoma	19	0.1	3	< 0.1	22	0.1
Signet ring cell carcinoma	92	0.6	24	0.2	116	0.4
All other adenocarcinoma	60	0.4	11	0.1	71	0.3
Carcinoma, NOS	441	2.6	235	2.4	676	2.5
Neuroendocrine tumours						
Neuroendocrine carcinoma	105	0.6	53	0.5	158	0.6
Other neuroendocrine tumours	2	< 0.1	0	0.0	2	< 0.1
Adenosquamous carcinoma						
Adenosquamous Carcinoma	57	0.3	25	0.3	82	0.3
Mesenchymal tumours						
Gastrointestinal stromal tumour	1	< 0.1	3	< 0.1	4	< 0.1
Other mesenchymal tumours	6	< 0.1	2	< 0.1	8	< 0.1
Others	106	0.6	44	0.4	150	0.6
Total	16655	100.0	9921	100.0	26576	100.0

2.5.2 Stomach (C16)

Table 2.5.2: Number (n) and proportion (%) according to broad histological classification- Cancer of Stomach

Broad histological classification	Males		Females		Total	
	n	%	n	%	n	%
Adenocarcinoma						
Adenocarcinoma NOS	10681	76.2	4452	68.9	15133	73.9
Papillary adenocarcinoma	49	0.3	14	0.2	63	0.3
Signet ring cell carcinoma	1230	8.8	914	14.2	2144	10.5
Linitus plastica	1	< 0.1	3	< 0.1	4	< 0.1
Adenocarcinoma, intestinal type	137	1.0	34	0.5	171	0.8
Adenocarcinoma, diffuse type	108	0.8	77	1.2	185	0.9
All other adenocarcinomas	313	2.2	107	1.7	420	2.1
Carcinoma NOS	526	3.8	242	3.7	768	3.7
Squamous cell carcinoma						
Squamous cell carcinoma NOS	418	3.0	271	4.2	689	3.4
Neuroendocrine tumours						
Neuroendocrine Carcinoma	127	0.9	49	0.8	176	0.9
Typical carcinoid	4	< 0.1	4	0.1	8	< 0.1
Goblet cell carcinoid	1	< 0.1	0	0.0	1	< 0.1
Mesenchymal tumours						
Gastrointestinal stromal sarcoma	236	1.7	160	2.5	396	2.0
Other mesenchymal tumours	15	0.1	14	0.2	29	0.1
Adenosquamous carcinoma	31	0.2	18	0.3	49	0.2
Others	140	1.0	92	1.4	232	1.1
Total	14024	100.0	6459	100.0	20483	100.0

2.5.3 Liver (C22)

Table 2.5.3: Number (n) and proportion (%) according to broad histological classification- Cancer of Liver

Broad histological classification	Males		Females		Total	
	n	%	n	%	n	%
Malignant hepatocellular tumours						
Hepatocellular carcinoma	3055	67.9	739	45.1	3794	61.8
Hepatoblastoma	187	4.2	118	7.2	305	5.0
Malignant biliary tumours						
Cholangiocarcinoma	354	7.9	279	17.0	633	10.3
Combined Hepatocellular carcinoma & Cholangiocarcinoma	29	0.6	10	0.6	39	0.6
Neuroendocrine carcinoma	57	1.3	36	2.2	93	1.5
Carcinoma, NOS	147	3.3	56	3.4	203	3.3
Other adenocarcinomas	508	11.3	319	19.5	827	13.5
Squamous cell carcinoma						
Squamous cell carcinoma	20	0.4	16	1.0	36	0.6
Others	142	3.2	66	4.0	208	3.4
Total	4499	100.0	1639	100.0	6138	100.0

2.5.4 Gall Bladder (C23- C24)

Table 2.5.4: Number (n) and proportion (%) according to broad histological classification- Cancer of Gall Bladder

Broad histological classification	Males		Females		Total	
	n	%	n	%	n	%
Malignant epithelial tumours						
Adenocarcinoma, NOS	5065	78.8	8169	81.9	13234	80.7
Cholangiocarcinoma	224	3.5	200	2.0	424	2.6
Squamous Cell Carcinoma	104	1.6	126	1.3	230	1.4
All other Adenocarcinoma	96	1.5	113	1.1	209	1.3
Mucinous Adenocarcinoma	68	1.1	89	0.9	157	1.0
Neuroendocrine Tumour	72	1.1	79	0.8	151	0.9
Adenosquamous carcinoma	41	0.6	80	0.8	121	0.7
Mixed Adenocarcinoma	3	< 0.1	8	0.1	11	0.1
Carcinoma NOS	408	6.3	577	5.8	985	6.0
Mesenchymal tumours						
Gastrointestinal stromal sarcoma	2	< 0.1	0	0.0	2	< 0.1
Others	347	5.4	528	5.3	875	5.3
Total	6430	100.0	9969	100.0	16399	100.0

2.5.5 Pancreas (C25)

Table 2.5.5: Number (n) and proportion (%) according to broad histological classification- Cancer of Pancreas

Broad Histological Classification	Males		Females		Total	
	n	%	n	%	n	%
Adenocarcinoma						
Adenocarcinoma, NOS	2177	69.0	1312	67.6	3489	68.5
Mucinous adenocarcinoma	45	1.4	34	1.8	79	1.6
Signet ring cell carcinoma	1	< 0.1	0	0.0	1	< 0.1
Papillary adenocarcinoma	7	0.2	17	0.9	24	0.5
All other adenocarcinomas	29	0.9	25	1.3	54	1.1
Carcinoma, NOS	339	10.7	181	9.3	520	10.2
Neuroendocrine tumours						
Neuroendocrine carcinoma	172	5.5	150	7.7	322	6.3
Squamous cell carcinoma						
Squamous cell carcinoma	53	1.7	30	1.5	83	1.6
Other Malignant epithelial tumours						
Solid pseudopapillary carcinoma	4	0.1	13	0.7	17	0.3
Pancreatoblastoma	6	0.2	3	0.2	9	0.2
Mixed acinar-endocrine carcinoma	4	0.1	2	0.1	6	0.1
Mesenchymal tumours						
Gastrointestinal stromal sarcoma	1	< 0.1	3	0.2	4	0.1
All other sarcomas	8	0.3	5	0.3	13	0.3
Others	308	9.8	165	8.5	473	9.3
Total	3154	100.0	1940	100.0	5094	100.0

2.5.6 Small Intestine (C17)

Table 2.5.6: Number (n) and proportion (%) according to broad histological classification- Cancer of Small Intestine

Broad Histological Classification	Males		Females		Total	
	n	%	n	%	n	%
Adenocarcinoma						
Adenocarcinoma, NOS	375	56.0	235	53.9	610	55.2
Mucinous adenocarcinoma	9	1.3	11	2.5	20	1.8
Signet ring cell carcinoma	8	1.2	4	0.9	12	1.1
Papillary adenocarcinoma	3	0.4	3	0.7	6	0.5
All other adenocarcinomas	1	0.1	1	0.2	2	0.2
Neuroendocrine tumours						
Neuroendocrine carcinoma	114	17.0	71	16.3	185	16.7
Mesenchymal tumours						
Gastrointestinal stromal sarcoma	97	14.5	61	14.0	158	14.3
Carcinoma, NOS	28	4.2	16	3.7	44	4.0
Squamous cell carcinoma						
Squamous cell carcinoma, NOS	3	0.4	7	1.6	10	0.9
All other squamous cell carcinomas	9	1.3	9	2.1	18	1.6
All other sarcomas	2	0.3	4	0.9	6	0.5
Others	21	3.1	14	3.2	35	3.2
Total	670	100.0	436	100.0	1106	100.0

2.5.7 Colon (C18)

Table 2.5.7: Number (n) and proportion (%) according to broad histological classification- Cancer of Colon

Broad histological classification	Males		Females		Total	
	n	%	n	%	n	%
Adenocarcinoma						
Adenocarcinoma NOS	5320	81.4	3545	81.7	8865	81.5
Papillary adenocarcinoma	35	0.5	35	0.8	70	0.6
Signet ring cell carcinoma	205	3.1	102	2.4	307	2.8
Mucinous adenocarcinoma	344	5.3	226	5.2	570	5.2
Mucin-producing adenocarcinoma	131	2.0	86	2.0	217	2.0
All other adenocarcinomas	40	0.6	16	0.4	56	0.5
Carcinoma, NOS	208	3.2	146	3.4	354	3.3
Squamous cell carcinoma						
Squamous cell carcinoma	54	0.8	35	0.8	89	0.8
Neuroendocrine tumours						
Neuroendocrine carcinoma	39	0.6	26	0.6	65	0.6
Other neuroendocrine tumours	4	0.1	10	0.2	14	0.1
Mesenchymal tumours						
Gastrointestinal stromal sarcoma	17	0.3	9	0.2	26	0.2
Other mesenchymal tumours	6	0.1	11	0.3	17	0.2
Others	133	2.0	90	2.1	223	2.1
Total	6536	100.0	4337	100.0	10873	100.0

2.5.8 Rectum (C19 – C20)

Table 2.5.8: Number (n) and Relative proportion (%) according to broad histological classification- Cancer of Rectum

Broad histological classification	Males		Females		Total	
	n	%	n	%	n	%
Adenocarcinoma						
Adenocarcinoma NOS	7940	83.5	5366	85.5	13306	84.3
Papillary adenocarcinoma	110	1.2	71	1.1	181	1.1
Signet ring cell carcinoma	425	4.5	222	3.5	647	4.1
Mucinous adenocarcinoma	256	2.7	128	2.0	384	2.4
Mucin-producing adenocarcinoma	172	1.8	93	1.5	265	1.7
All other adenocarcinomas	54	0.6	42	0.7	96	0.6
Carcinoma, NOS	235	2.5	135	2.2	370	2.3
Squamous cell carcinoma						
Squamous cell carcinoma	158	1.7	130	2.1	288	1.8
Neuroendocrine tumours						
Neuroendocrine carcinoma	53	0.6	33	0.5	86	0.5
Other neuroendocrine tumours	2	< 0.1	2	< 0.1	4	< 0.1
Mesenchymal tumours						
Gastrointestinal stromal sarcoma	29	0.3	9	0.1	38	0.2
Other mesenchymal tumour	4	< 0.1	4	0.1	8	0.1
Others	68	0.7	41	0.7	109	0.7
Total	9506	100.0	6276	100.0	15782	100.0

2.5.9 Anus and Anal Canal (C21)

Table 2.5.9: Number (n) and proportion (%) according to broad histological classification - Cancer of Anus and Anal Canal

Broad Histological Classification	Males		Females		Total	
	n	%	n	%	n	%
Squamous cell carcinoma						
Squamous cell carcinoma, NOS	796	43.7	483	42.5	1279	43.3
All other squamous cell carcinomas	45	2.5	28.0	2.5	73	2.5
Adenocarcinoma						
Adenocarcinoma, NOS	713	39.2	474	41.7	1187	40.2
Mucinous adenocarcinoma	91	5.0	33	2.9	124	4.2
Signet ring cell carcinoma	73	4.0	30	2.6	103	3.5
Papillary adenocarcinoma	13	0.7	13	1.1	26	0.9
All other adenocarcinomas	10	0.5	11	1.0	21	0.7
Carcinoma, NOS	62	3.4	48.0	4.2	110	3.7
Neuroendocrine tumours						
Neuroendocrine carcinoma	6	0.3	4	0.4	10	0.3
Other Neuroendocrine tumour	1	0.1	0	0.0	1	<0.1
Mesenchymal tumours						
Gastrointestinal stromal sarcoma	2	0.1	0	0.0	2	0.1
All other sarcomas	3	0.2	6	0.5	9	0.3
Others	5	0.3	6	0.5	11	0.4
Total	1820	100.0	1136	100.0	2956	100.0

2.6 Clinical Extent of Disease

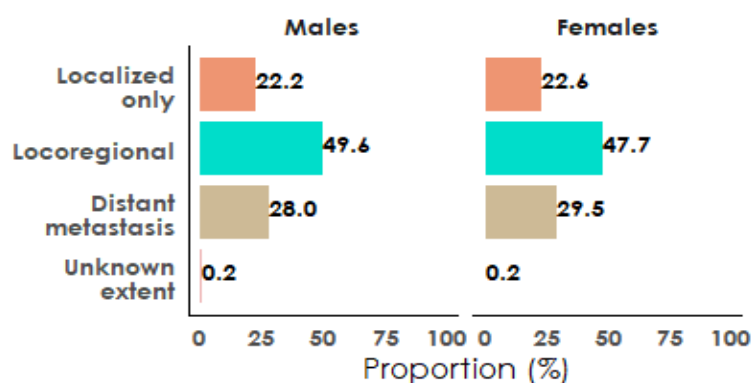


Figure 2.6.1: Clinical extent of disease (%) for all sites of GI tract cancers in males and females

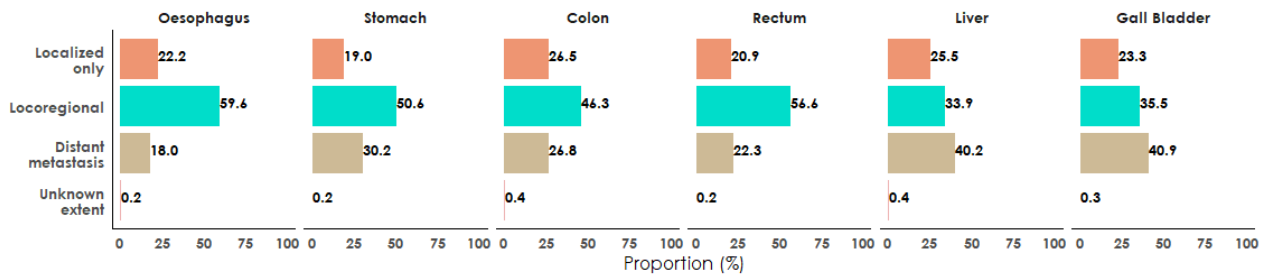


Figure 2.6.2: Clinical extent of disease (%): Site wise GI tract cancers – Males

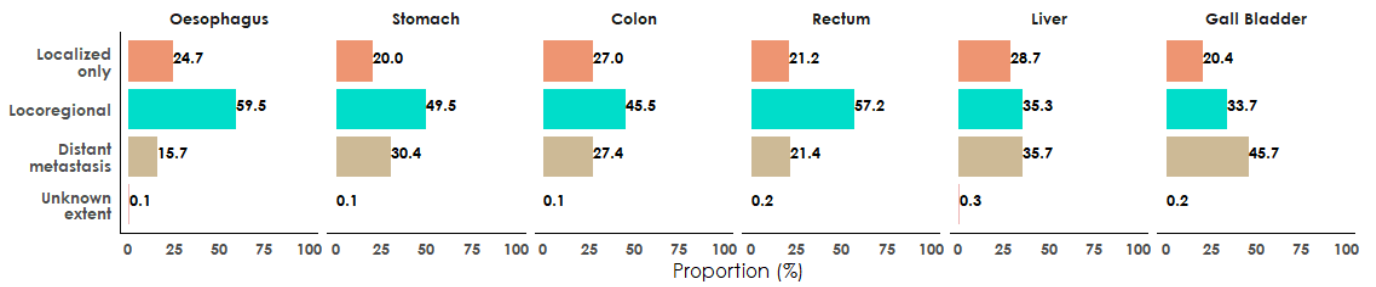


Figure 2.6.3: Clinical extent of disease (%): Site wise GI tract cancers - Females

2.7 Intention to treat

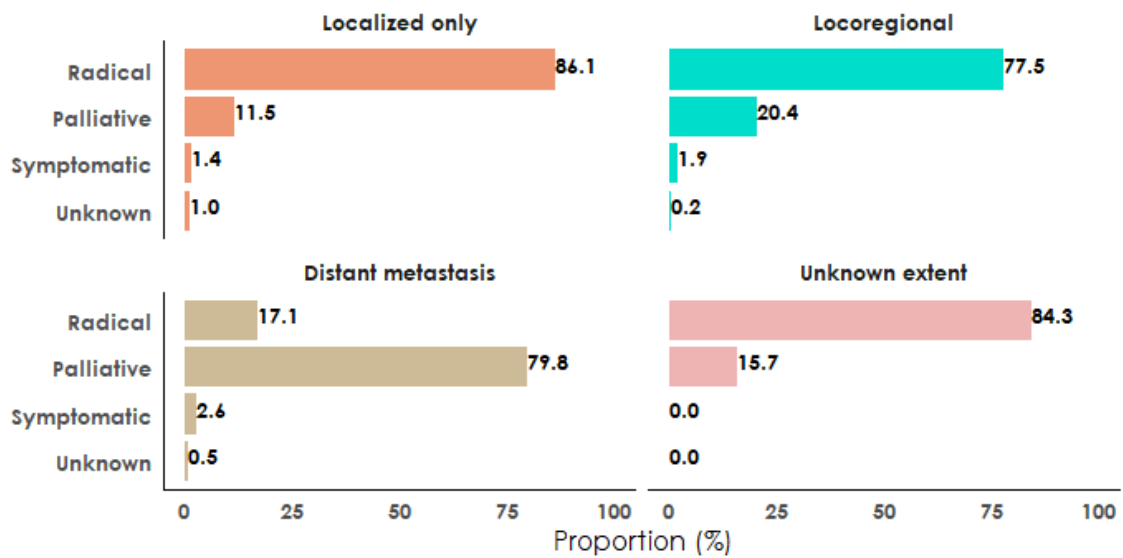


Figure 2.7: Intention to treat according to clinical extent of disease (%) – GI tract cancers in both sexes

2.8 Treatment modalities according to clinical extent of disease

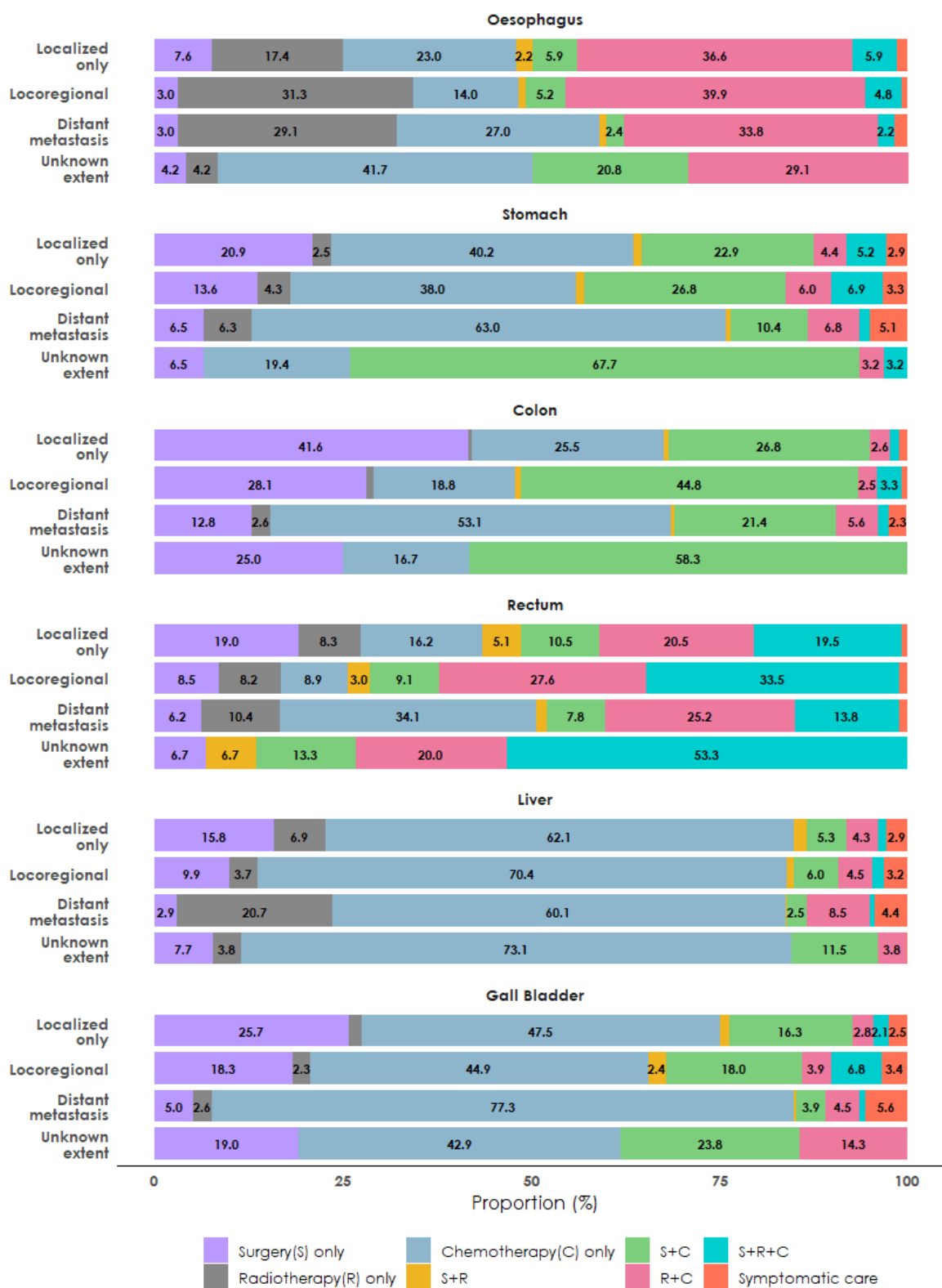


Figure 2.8.1: Type of treatment according to clinical extent of disease- GI tract cancers - Males

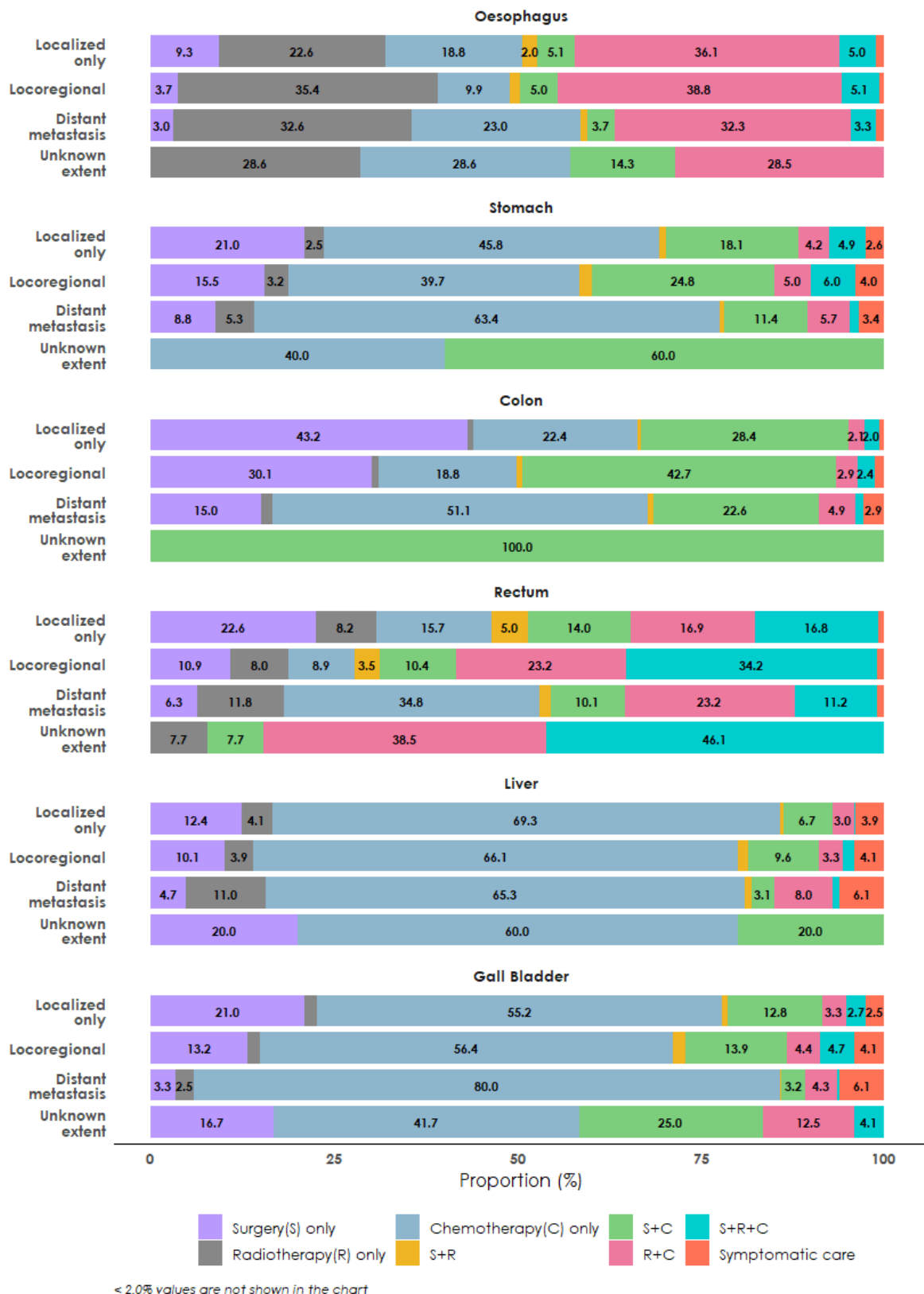


Figure 2.8.2: Type of treatment according to clinical extent of disease – GI tract cancers – Females

2.9 Waiting time between registration and commencement of cancer directed treatment

2.9.1 Patients of GI tract cancers earlier diagnosed at another health facility and referred for cancer directed treatment to the reporting institution

(a) Time between diagnosis and first attendance at the reporting institution

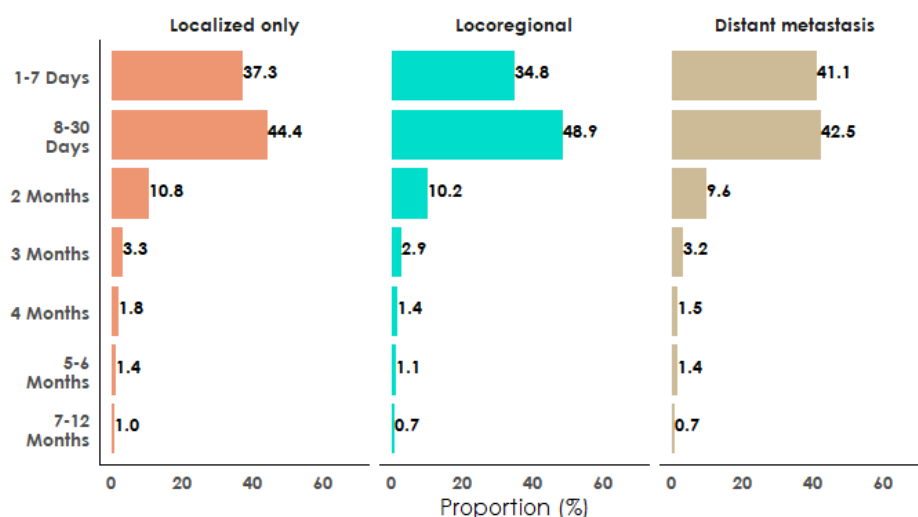


Figure 2.9.1a: Time between diagnosis and first attendance at reporting institution

(b) Time between first attendance and commencement of cancer directed treatment at reporting institution

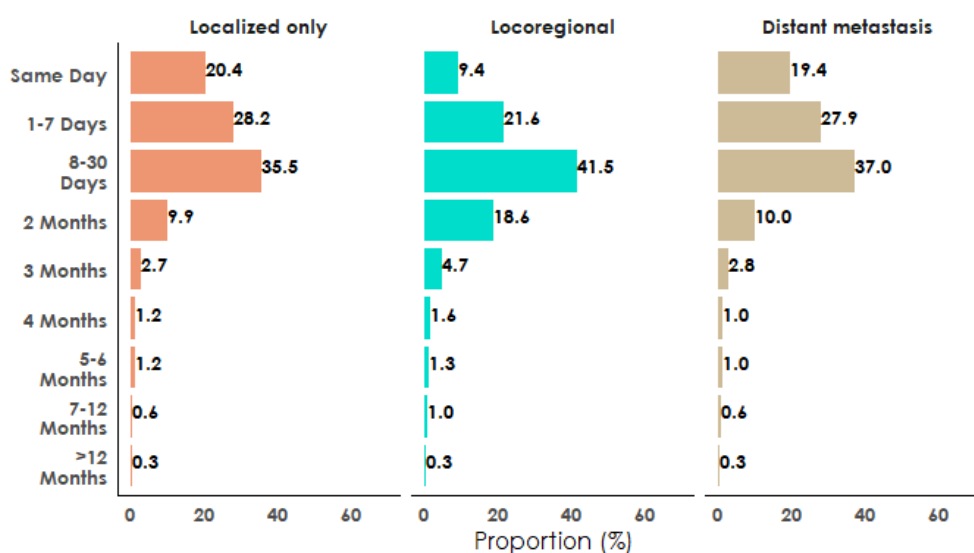


Figure 2.9.1b: Time between first attendance and commencement of cancer directed treatment at reporting institution

(c) Time between first diagnosis and commencement of cancer directed treatment at reporting institution

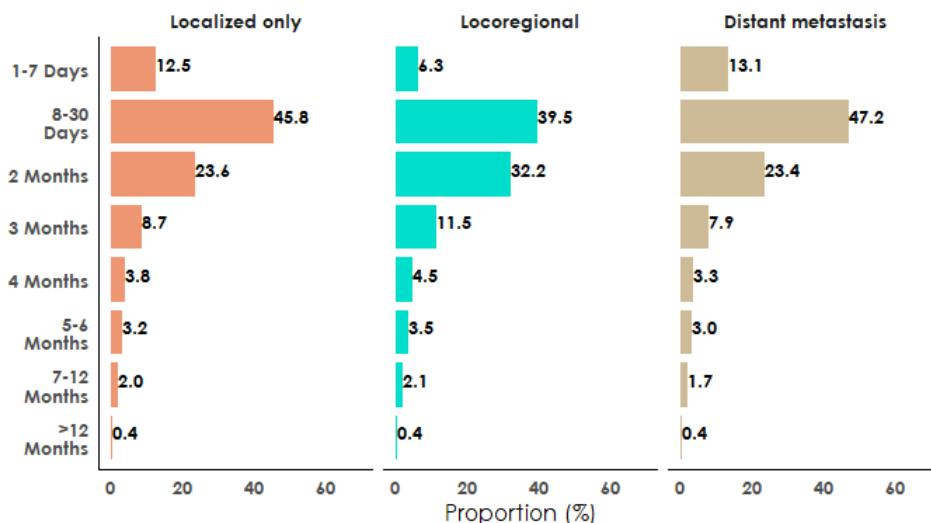


Figure 2.9.1c: Time between first diagnosis and commencement of cancer directed treatment at reporting institution

2.9.2 Patients of GI tract cancers diagnosed and treated for cancer at the reporting institution

Time between first diagnosis and commencement of cancer directed treatment at reporting institution

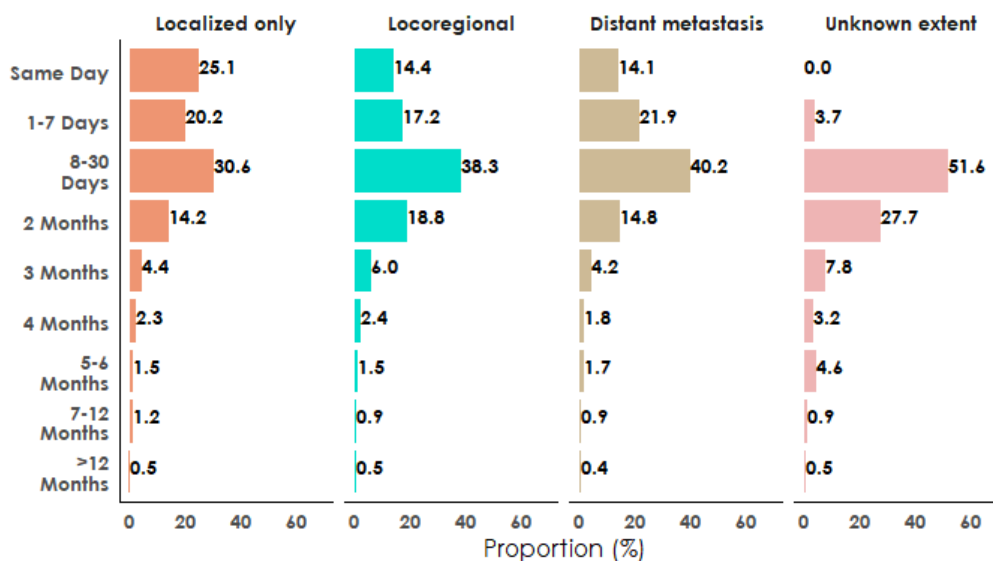


Figure 2.9.2: Time between first diagnosis and commencement of cancer directed treatment at reporting institution

Key Findings

- The proportion of gall bladder cancer relative to all sites was higher in females (3.7%) than males (2.2%), in comparison to other gastrointestinal sites.
- Over one-tenth of GI cancers were reported in the age group of 60-64 years among males.
- Gall bladder cancer was reported in a higher proportion at a younger age (45-49 years) in women compared to other cancers.
- Liver cancers comprised over half the cancers in the less than 20 years age group in both sexes.
- Rectal cancers comprised over a quarter of the cancers in the younger age groups (20 to 34 years) in both sexes.
- Squamous Cell Carcinoma (SCC) constituted the majority of the oesophageal cancer cases.
- Adenocarcinoma was the major histological type for all gastrointestinal cancer sites except oesophagus and anus where squamous cell carcinoma was the commonest.
- A higher proportion of patients with gall bladder and liver cancers had distal metastasis at the time of presentation.
- Chemotherapy was the primary single treatment modality for most stomach, liver and gall bladder cancers, irrespective of the disease stage.
- The time between first diagnosis and commencement of cancer directed treatment at reporting institution for over one-third of the patients ranged from 8 days to 30 days.