

Chapter - 4

Gynaecological Cancers including Breast Cancer (C50-C58)

CHAPTER 4

GYNAECOLOGICAL CANCERS INCLUDING BREAST CANCER

Table 4.0: Site classification according to ICD-10

Site of Cancer	ICD-10 Code
Breast	C50
Vulva	C51
Vagina	C52
Cervix Uteri	C53
Corpus Uteri	C54
Uterus part unspecified	C55
Ovary	C56
Fallopian Tube	C57

4.1 Number and relative proportion of gynaecological cancers including breast cancer

Table 4.1: Number (n) and relative proportion (%) of gynaecological cancers including breast cancer relative to all sites of cancer among women

Site of cancer (ICD-10 Code)	n	%
Breast (C50)	73998	25.4
Cervix Uteri (C53)	44300	15.2
Corpus Uteri (C54)	7648	2.6
Ovary (C56)	18411	6.3
Other Gynaecological Cancers (C51, C52, C55, C57, C58)	3981	1.4
C51(Vulva)	1112	0.4
C52(Vagina)	1749	0.6
C55 (Uterus part unspecified)	691	0.2
C57 (Fallopian tube)	216	0.1
C58 (Placenta)	213	0.1
Gynaecological cancers including breast cancer	148338	51.0
All sites of cancer in women	290986	100.0

4.2 Distribution of gynaecological cancers including breast cancer according to five-year age groups

Table 4.2: Number (n) and proportion (%) of gynaecological cancers including breast cancer according to five-year age groups

Age group	Breast			Cervix Uteri			Corpus Uteri			Ovary			Other Gynaecological Cancers			Total		
	n	Row %	Col %	n	Row %	Col %	n	Row %	Col %	n	Row %	Col %	n	Row %	Col %	n	Row %	Col %
< 20	26	2.6	<0.1	9	1.0	<0.1	6	0.4	0.1	624	82.0	3.4	62	14.0	1.6	727	100.0	0.5
20-24	302	32.4	0.4	68	7.3	0.1	24	2.6	0.3	442	47.4	2.4	96	10.3	2.4	932	100.0	0.6
25-29	1330	56.2	1.8	309	13.0	0.7	53	2.2	0.7	535	22.6	2.9	141	6.0	3.5	2368	100.0	1.6
30-34	3512	64.0	4.7	1025	18.7	2.3	105	1.9	1.4	690	12.6	3.8	156	2.8	3.9	5488	100.0	3.7
35-39	6716	59.3	9.1	2919	25.8	6.6	214	1.9	2.8	1270	11.2	6.9	208	1.8	5.2	11327	100.0	7.7
40-44	9778	55.7	13.2	5215	29.7	11.8	334	1.9	4.3	1942	11.0	10.6	297	1.7	7.5	17566	100.0	11.8
45-49	12465	52.4	16.8	7423	31.2	16.8	651	2.7	8.5	2784	11.7	15.1	472	2.0	11.9	23795	100.0	16.0
50-54	11239	48.8	15.2	7320	31.8	16.5	1213	5.2	15.9	2759	12.0	15.0	515	2.2	12.9	23046	100.0	15.6
55-59	9764	46.9	13.2	6647	31.9	15.0	1469	7.0	19.2	2433	11.7	13.2	520	2.5	13.1	20833	100.0	14.0
60-64	8116	44.1	11.0	5994	32.6	13.5	1565	8.5	20.5	2195	11.9	11.9	522	2.9	13.1	18392	100.0	12.4
65-69	5479	44.2	7.4	3949	31.8	8.9	1093	8.8	14.3	1460	11.8	7.9	419	3.4	10.5	12400	100.0	8.4
70-74	2916	44.4	3.9	2021	30.8	4.6	570	8.7	7.4	771	11.8	4.2	285	4.3	7.2	6563	100.0	4.4
75-79	1424	47.7	1.9	832	27.9	1.9	227	7.6	3.0	332	11.1	1.8	171	5.7	4.3	2986	100.0	2.0
80-84	649	48.9	0.9	381	28.7	0.9	86	6.5	1.1	126	9.5	0.7	85	6.4	2.1	1327	100.0	0.9
85+	281	48.3	0.4	184	31.7	0.4	38	6.5	0.5	46	7.9	0.2	32	5.5	0.8	581	100.0	0.4
All ages*	73998	49.9	100.0	44300	29.9	100.0	7648	5.1	100.0	18411	12.4	100.0	3981	2.7	100.0	148338	100.0	100.0
Mean (SD) (Years)	51 (12)			53 (11)			58 (11)			50 (14)			53 (15)			52 (12)		

* Includes cases with unknown age

4.3 Broad methods of diagnosis

Table 4.3: Number (n) and proportion (%) of cancer sites by most valid method of diagnosis – gynaecological cancers including breast cancer

Method of diagnosis	Breast		Cervix Uteri		Corpus Uteri		Ovary		Other Gynaecological Cancers		Total	
	n	%	n	%	n	%	n	%	n	%	N	%
Microscopic	73766	99.7	44102	99.6	7595	99.3	17887	97.2	3877	97.4	147227	99.3
Imaging Techniques	123	0.2	107	0.2	40	0.5	389	2.1	44	1.1	703	0.5
Clinical Only	69	0.1	71	0.2	7	0.1	44	0.2	13	0.3	204	0.1
Total*	73998	100.0	44300	100.0	7648	100.0	18411	100.0	3981	100.0	148338	100.0

*Cases with unknown and other methods of diagnosis are included.

4.4 Types of microscopic diagnosis

Table 4.4: Number (n) and proportion (%) according to specific type of microscopic diagnosis – gynaecological cancers including breast cancer

Type of microscopic diagnosis	Breast		Cervix Uteri		Corpus Uteri		Ovary		Other Gynaecological Cancers		Total	
	n	%	n	%	n	%	n	%	n	%	n	%
Primary Histology	68651	93.1	42920	97.3	7375	97.1	14517	81.2	3694	95.3	137157	93.2
Histology of metastasis	513	0.7	96	0.2	35	0.5	601	3.4	18	0.4	1263	0.8
Cytology of Primary	4054	5.5	1038	2.4	169	2.2	2136	11.9	138	3.6	7535	5.1
Cytology of Metastasis	548	0.7	48	0.1	16	0.2	633	3.5	27	0.7	1272	0.9
All microscopic	73766	100.0	44102	100.0	7595	100.0	17887	100.0	3877	100.0	147227	100.0

4.5 Major histological types

4.5.1 Breast (C50)

Table 4.5.1: Number (n) and proportion (%) according to broad histological classification – Breast Cancer

Broad histological classification	n	%
Epithelial tumours		
Infiltrating duct carcinoma	66160	89.7
Lobular carcinoma	1341	1.8
Papillary carcinoma	398	0.5
Carcinoma, NOS	3025	4.1
Fibroepithelial tumours		
Phyllodes tumour	414	0.6
Mesenchymal tumours		
Sarcoma	122	0.2
Others	2306	3.1
Total	73766	100.0

4.5.2 Cervix Uteri (C53)

Table 4.5.2: Number (n) and proportion (%) according to broad histological classification- Cancer of Cervix Uteri

Broad histological classification	n	%
Squamous cell carcinoma		
Squamous cell carcinoma, NOS	26524	60.1
Squamous cell carcinoma, non-keratinising	8314	18.9
Squamous cell carcinoma, keratinising	4184	9.5
All other squamous cell carcinomas	430	1.0
Adenocarcinoma		
Adenocarcinoma, NOS	2215	5.0
All other adenocarcinomas	687	1.6
Carcinoma, NOS	1150	2.6
Adenosquamous carcinoma		
Adenosquamous carcinoma	426	1.0
Mesenchymal tumours		
Sarcoma	52	0.1
Others	120	0.3
Total	44102	100.0

4.5.3 Corpus Uteri (C54)

Table 4.5.3: Number (n) and proportion (%) according to broad histological Classification-Cancer of Corpus Uteri

Broad histological classification	n	%
Endometrial epithelial tumours		
Endometrioid adenocarcinoma	4133	54.4
Adenocarcinoma, NOS	1779	23.4
Serous carcinoma	204	2.7
Clear cell adenocarcinoma	146	1.9
Papillary adenocarcinoma	129	1.7
All other adenocarcinomas	69	0.9
Carcinoma, NOS	363	4.8
Mixed epithelial mesenchymal tumours		
Mullerian mixed tumour	134	1.8
Carcinosarcoma	94	1.2
Mesenchymal tumours		
Sarcoma	63	0.8
Endometrial stromal sarcoma	60	0.8
Neuroendocrine tumours		
Neuroendocrine carcinoma	16	0.2
Others	280	3.7
Total	7595	100.0

4.5.4 Ovary (C56)

Table 4.5.4: Number (n) and proportion (%) according to broad histological classification- Cancer of Ovary

Broad histological classification	n	%
Epithelial cell tumours		
Adenocarcinoma, NOS	5850	32.7
Serous Adenocarcinoma	5529	30.9
Mucinous Adenocarcinoma	895	5.0
Papillary Carcinoma, NOS	863	4.8
Endometrioid Adenocarcinoma	318	1.8
Clear Cell Adenocarcinoma	252	1.4
All Other Adenocarcinomas	68	0.4
Other Endometrioid tumours	7	<0.1
Granular cell carcinoma	6	<0.1
Metaplastic carcinoma	7	<0.1
Carcinoma, NOS	1299	7.3
Malignant Neoplasms - ovary	966	5.4
Germ cell tumours		
Germ Cell Neoplasms	863	4.8
Sex-cord stromal tumours		
Granulosa Cell Tumour	205	1.1
Mesenchymal tumours		
Sarcoma	117	0.7
Others	642	3.6
Total	17887	100.0

4.6 Clinical Extent of Disease

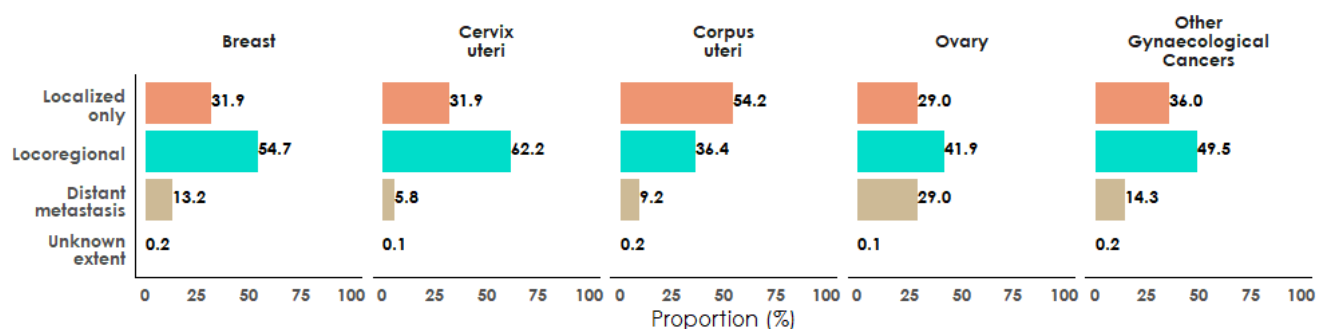


Figure 4.6: Clinical extent of disease (%) for all sites of different type of gynaecological cancers including breast cancer

4.7 Intention to Treat

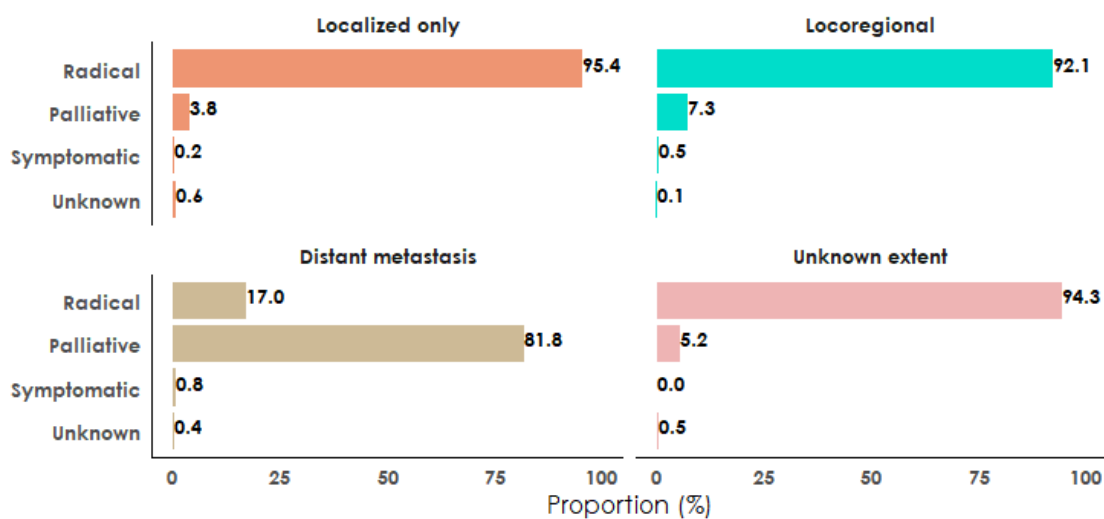


Figure 4.7: Intention to treat according to clinical extent of disease (%) – gynaecological cancers including breast cancer

4.8 Treatment modalities according to clinical extent of disease

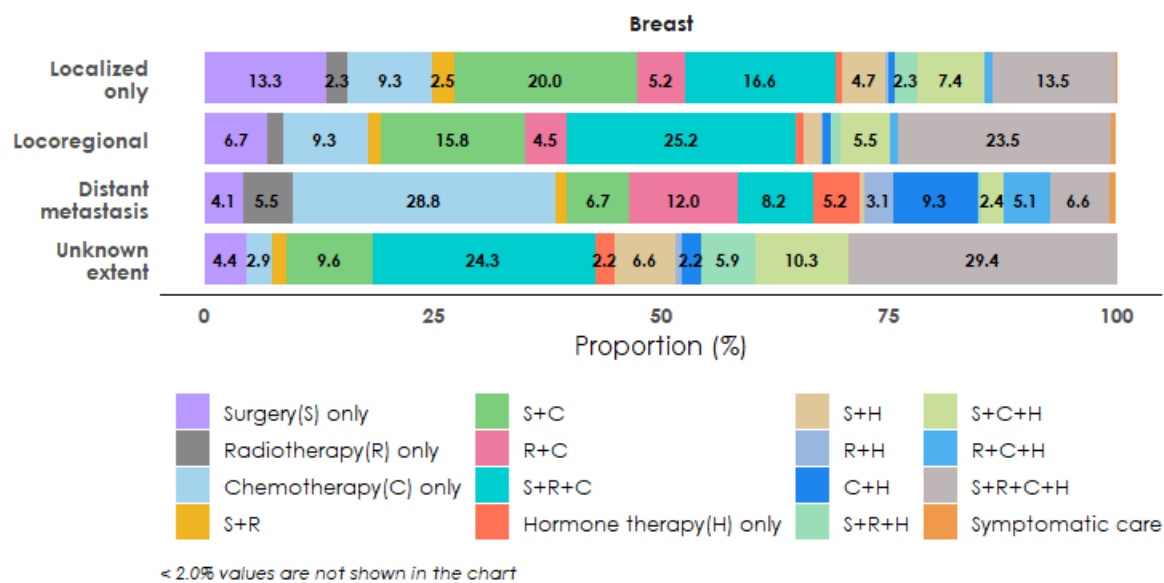


Figure 4.8.1: Type of treatment according to clinical extent of disease (%) – Breast Cancer

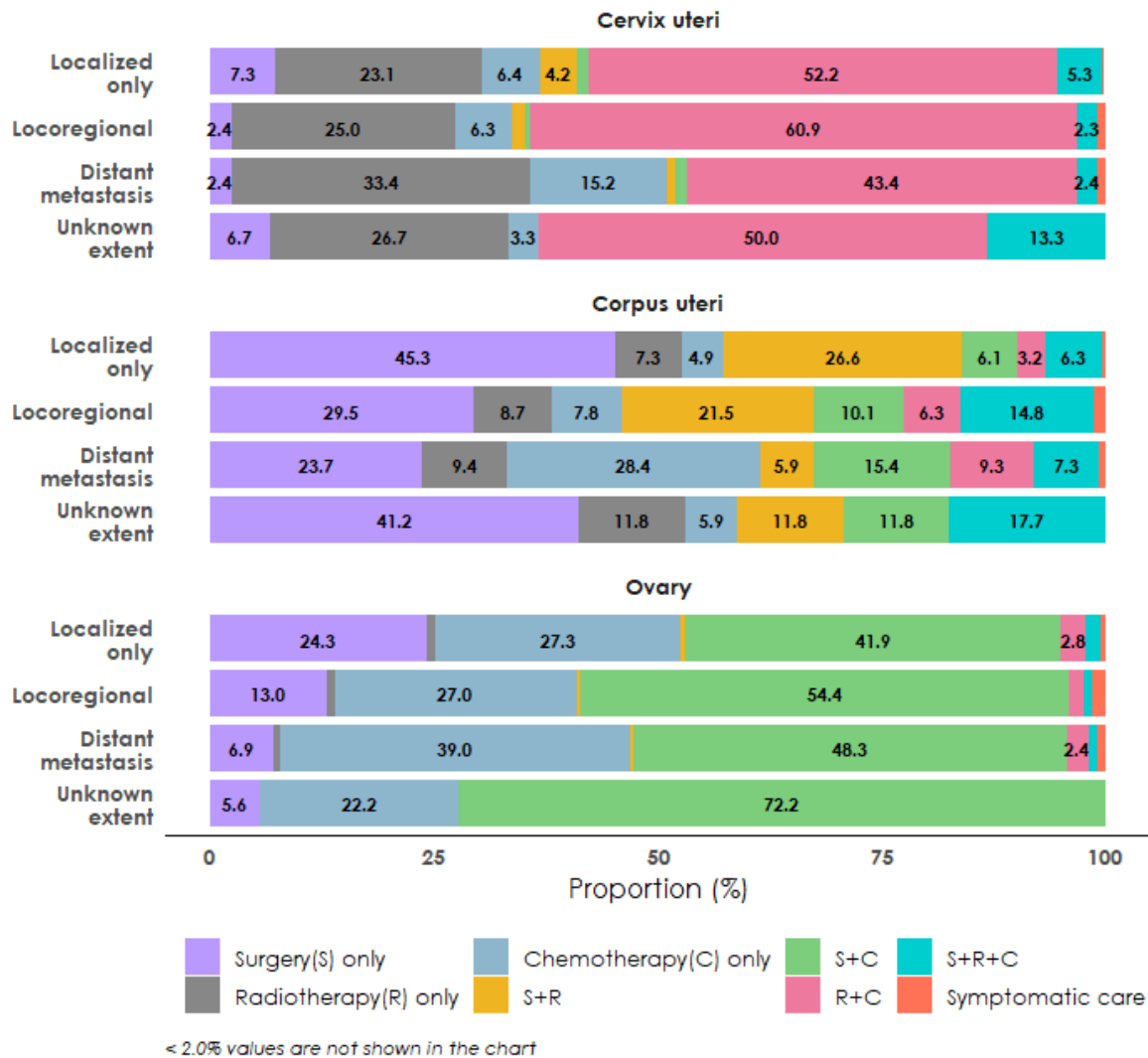


Figure 4.8.2: Type of treatment according to clinical extent of disease (%) – Cancer of cervix uteri, corpus uteri and ovary

4.9 Waiting time between registration and commencement of cancer directed treatment

4.9.1 Patients of gynaecological cancers including breast cancer earlier diagnosed at another health facility and referred for cancer directed treatment to the reporting institution

(a) Time between diagnosis and first attendance at the reporting institution

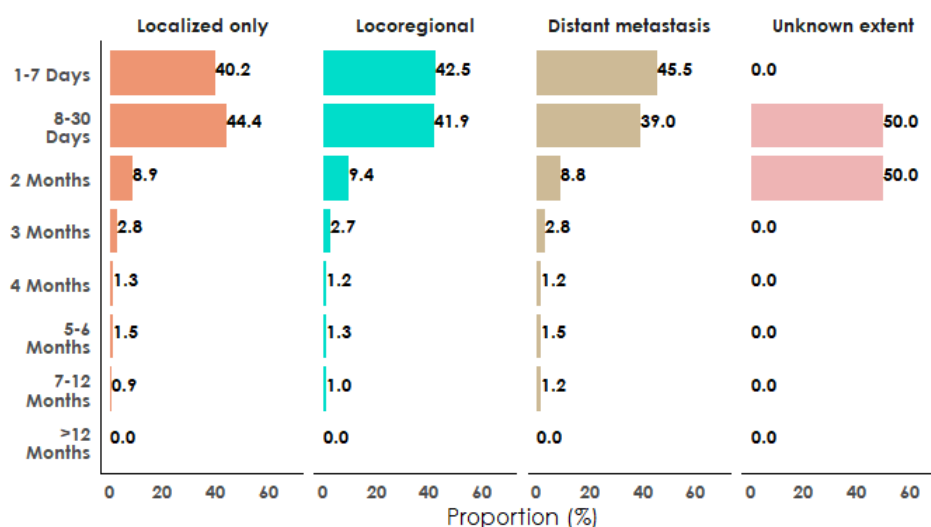


Figure 4.9.1a: Time between diagnosis and first attendance at reporting institution

(b) Time between first attendance and commencement of cancer directed treatment at reporting institution

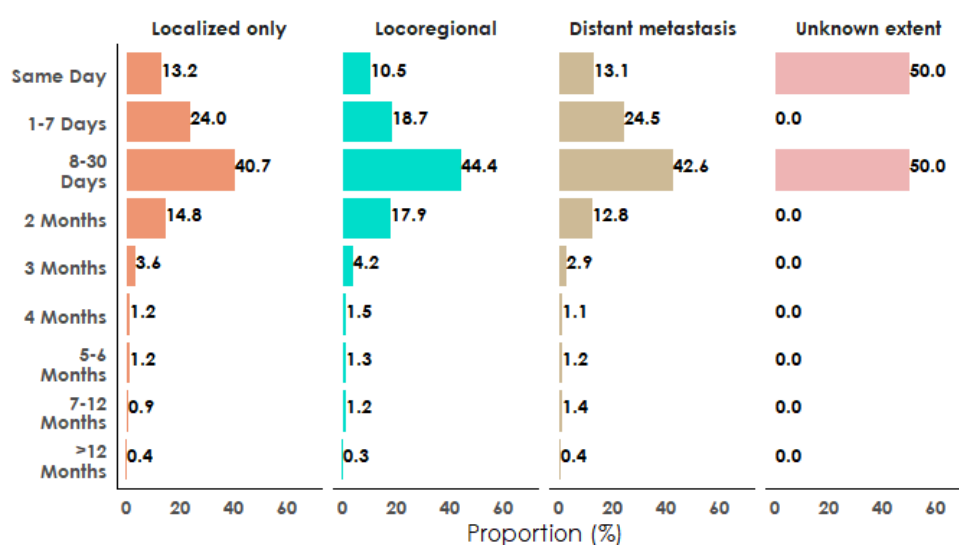


Figure 4.9.1b: Time between first attendance and commencement of cancer directed treatment at reporting institution

(c) Time between first diagnosis and commencement of cancer directed treatment at reporting institution

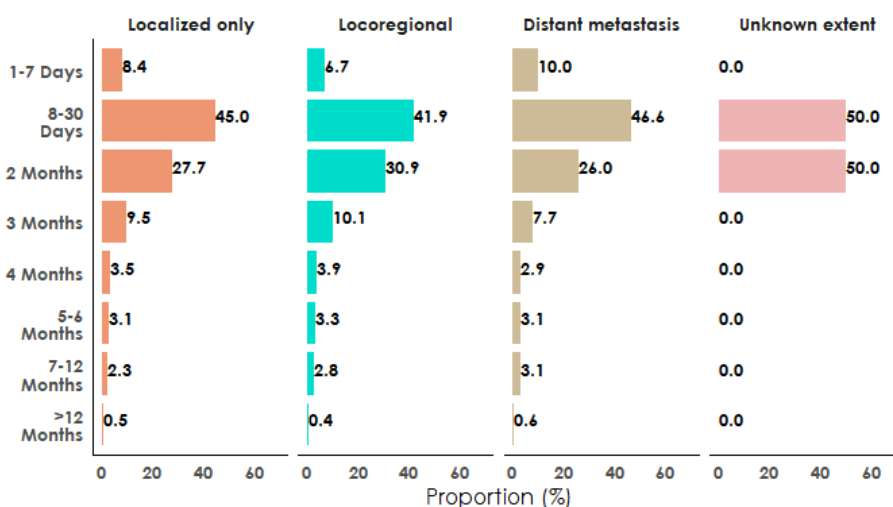


Figure 4.9.1c: Time between first diagnosis and commencement of cancer directed treatment at reporting institution

4.9.2 Patients of gynaecological cancers including breast cancer who had been diagnosed and treated for cancer at reporting institution

Time between first diagnosis and commencement of cancer directed treatment at reporting institution

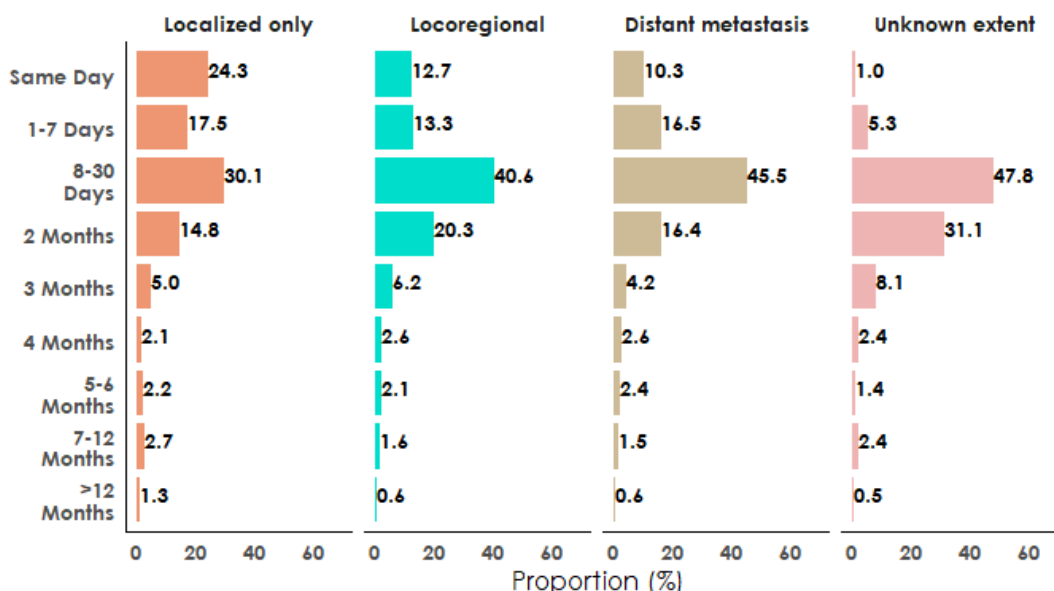


Figure 4.9.2: Time between first diagnosis and commencement of cancer directed treatment at Reporting Institution

Key findings

- Gynaecological cancers, including breast cancer, account for over half of all cancers in women. Over a quarter of the cases were breast cancer (25.4%) followed by cervical cancer (15.2%).
- In the younger age group (below 25 years), ovarian cancers were the commonest cancer types. From 25 years and up, breast cancer was the major cancer type in all age groups.
- Cancers of breast, cervix-uteri and ovary were recorded in higher proportion in the younger age group of 45-49 years than other gynaecological cancers.
- Epithelial tumours (infiltrating duct carcinoma-89.7%) was the most common histology of breast cancer, and squamous cell carcinoma (60.1 %) was the most common histology of cancer of cervix-uteri. Among corpus uteri cancer, endometroid adenocarcinoma (54.4%) was the most common histology observed.
- Over half of the patients with corpus uterine cancer presented with localised disease.
- Among all the gynaecological cancers, the proportion of patients presenting with distant spread was highest (nearly one-third) for ovarian cancer.
- The broadest used treatment modality for cervical cancer was a combination of radiotherapy and chemotherapy. A larger number of ovarian cancers were treated by surgery and chemotherapy combination.
- About a quarter of the patients with localised disease diagnosed at the reporting institution were initiated on cancer directed treatment on the same day.